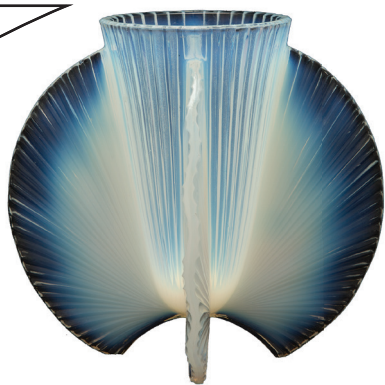


DECO DESIGN TIME

Symmetry describes an object with two matching halves, or multiple identical shapes, positioned around an axis or center point.



Organic or geometric . . . how will you compose your art-glass object?

©2022 by the Leigh Yawkey Woodson Art Museum
Front: Hexagonal armchair by Pierre Chareau, collection of the Musée d'Art Moderne de la Ville de Paris, photo by Sailko; Chrysler Building, photo by LMBrauer; Art Deco lamp, photo by Lex Tollenaar
Inside: Muller Frères, *Vase with Bird Design*, ca. 1925-1929, mold-blown glass with interior silver foil inclusions and surface etching; photo by Lloyd Shugart; Marius-Ernest Sabino, *Group of Panthers*, ca. 1928-1938, press-molded opal glass; photo by Lloyd Shugart; Robert Levin, *A Cup with Appeal* #3, 1977, blown glass
This page: Pierre D'Avesn, *Vase with Spiral Design*, ca. 1926-1931, press-molded opal glass; photo by Lloyd Shugart

Leigh Yawkey
Woodson
Art Museum

700 North Twelfth Street
Wausau, WI 54403
715.845.7010
www.lywam.org

Always **FREE Admission**

Connect with Us
Weekly blog Woodson Wanderings

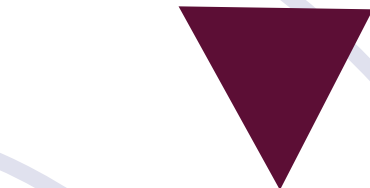
THE DRAMA OF DECO



BOXY



BOLD



ANGLES

The Art Deco movement of the 1920s and 30s originated in France when artists, architects, and designers sought to simplify and modernize the highly decorative and ornate motifs of Art Nouveau.

Art Deco celebrated clean lines and bold, confident forms reflecting rapid industrial growth and machine-age designs. Repetitive lines and symmetrical patterns featured both geometric shapes and sleek interpretations of figures, animals, and botanical subjects.

ARCHES

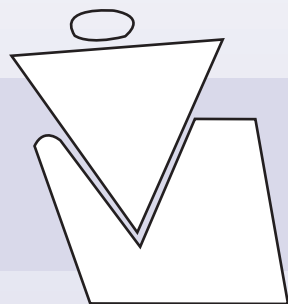


DESIGN DETECTIVE



Beetles, birds, butterflies . . .
can you spot these creatures and more
in the glass galleries?

1 The colored glass depicting this arctic animal matches its chilly surroundings.



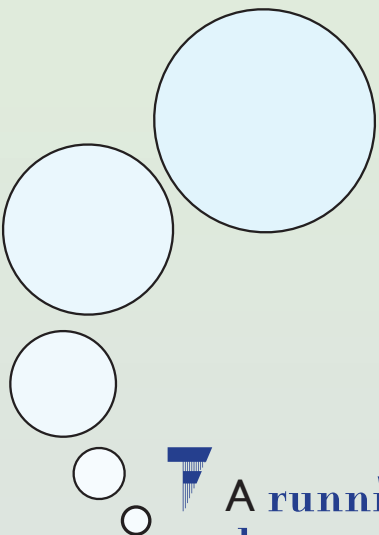
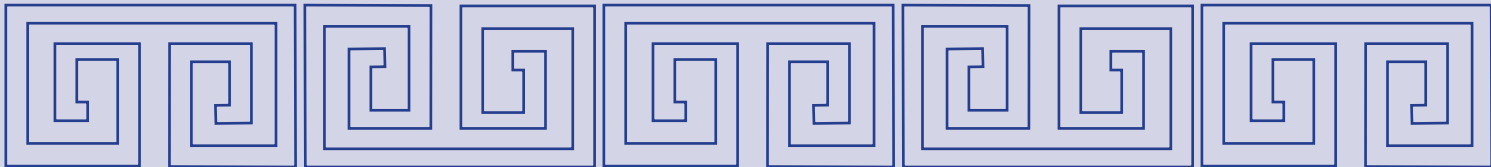
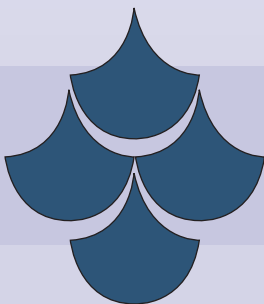
2 These shapes balance beautifully in glass.
Can you find this tower of geometry?

3 Some swing and climb, while others walk as if
in line; what jungle creatures can you find?



4 Shiny and slippery just like glass, how many fish do you pass?

5 Take a closer look. The fish scale pattern swims
its way into glass designs. Can you spot them?



6 Like bubbles from the bath, in
glass, how many soap-like spheres
can you find?

7 A running gazelle or a
darting dragonfly, who
would win in a race?
Can you spot these on a vase?



8 Looking for a garden in full bloom, find your favorite flowers “grown” in glass.



Glass is one of the most malleable and durable art
materials. Almost anything can be made from glass,
even a banana. What unexpected object would you
like to see become a glass object?

Draw your unexpected art-glass designs below.

