

# Make the Most of Your Museum Visit

## Notes for Educators and Chaperones

Please read and share this information before your visit. We look forward to welcoming you and your students!

- ➡ Divide students into groups of 10 prior to arriving at the Museum; identify one adult chaperone to every group of 10 students. Chaperones should stay with their assigned group throughout the visit.
- ➡ Educators and chaperones should assist Museum docents in creating a structured and engaging experience. The docent's role is to facilitate dialog in the galleries; chaperones should assist by encouraging students to share and discuss their ideas, monitoring the group's behavior, and helping if a student needs to use the restroom.
- ➡ Please share the Museum's "do not touch" policy with students. This is necessary to preserve artworks for future generations. Docents and gallery attendants will remind students not to touch artwork, pedestals/ bases, walls, and outdoor sculptures; educators and chaperones can help docents and guards by communicating these guidelines prior to and throughout their visit.
- ➡ Food and beverages, including gum and candy, are not permitted in the Museum.
- ➡ Docents will make hands-on touring items available for tactile learning experiences. Only pencils are permitted when writing or sketching in the galleries.

## Restrooms and Coatroom

Restrooms and the coatroom are located near the main entrance. Additional accessible restrooms are located on the lower level adjacent to Art Park.

## Photography

Photography is welcome throughout the Museum and grounds.

## Cancellations, Delays, or Changes

Please call the Museum at 715.845.7010 in the event of cancellation, delays, or significant attendance changes so staff and docents can plan accordingly.

Note: it may not be possible to extend a visit if a group is late.

## Meals on the Museum Campus

Groups are welcome to bring lunches to eat in the Museum classrooms, Sculpture Garden, or the Rooftop Sculpture Garden; please use the trash receptacles provided.

Note: Lunch plans must be preapproved to avoid scheduling and space conflicts.

## Bus Unloading and Entering

Buses should stop on the west side of Twelfth Street at the "Bus Unloading" sign. Students should unload and follow the sidewalk to the Museum's main entrance on the south side of the building.

The main entrance is wheelchair accessible. Docents will meet the group in the main entrance. See enclosed map.

**If you have questions, please contact the Museum at 715.845.7010 or [scheduling@lywam.org](mailto:scheduling@lywam.org)**



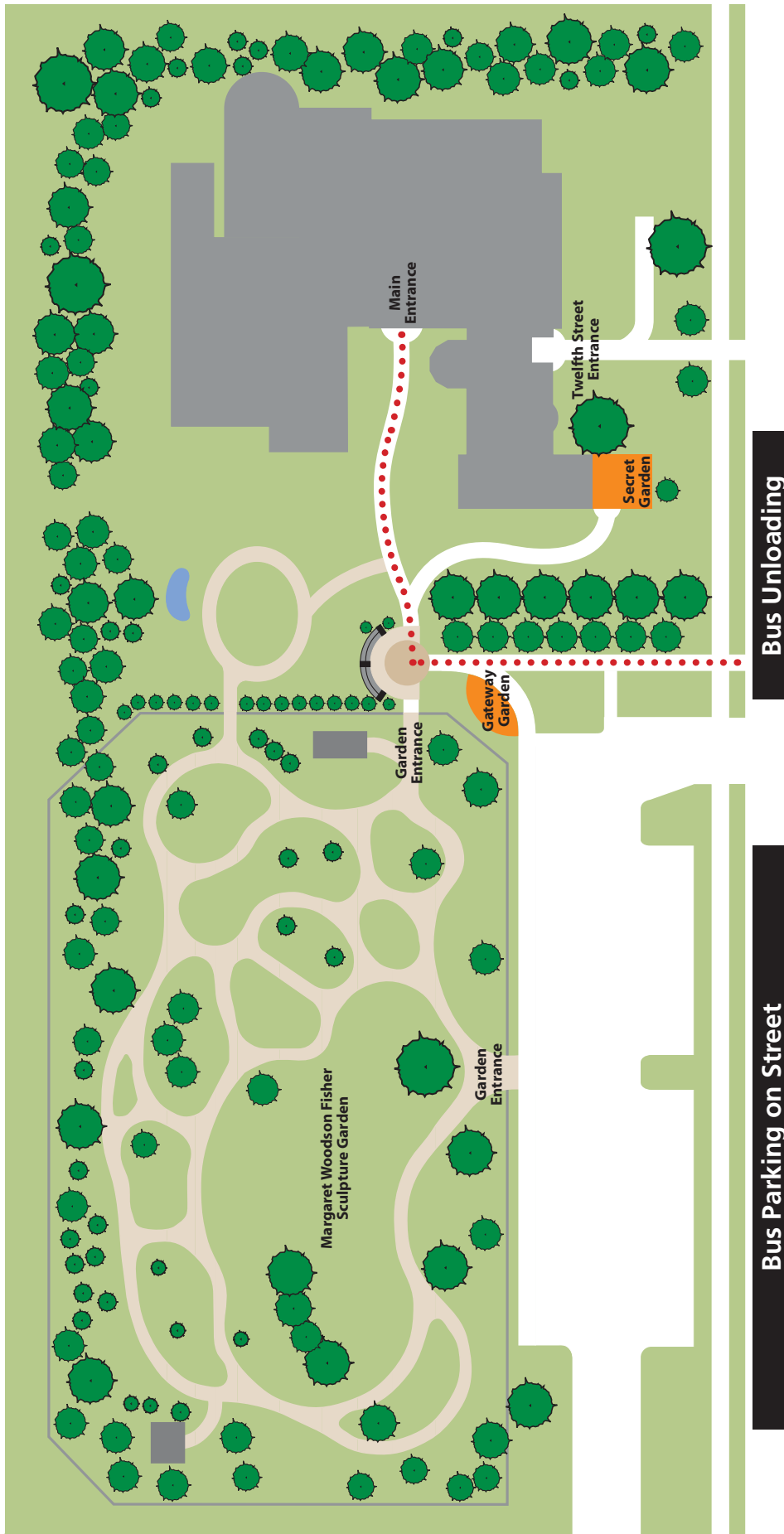
Follow Us     
Weekly Blog Woodson Wanderings

Franklin & 12th St.  
Wausau, WI 54403  
715.845.7010  
[www.lywam.org](http://www.lywam.org)

Tuesday – Friday	9 am – 4 pm
First Thursday of each month	9 am – 7:30 pm
Thursdays during Birds in Art	9 am – 7:30 pm
Saturday – Sunday	Noon – 5 pm

**Always FREE Admission**

Franklin Street



McClellan Street

Twelfth Street