

Leigh Yawkey Woodson Art Museum

CULTURAL CURRENCY



MARCH 4 - JUNE 4, 2023

SUPPORTED BY



CULTURAL CURRENCY

Contemporary Art from the Riemer Collection

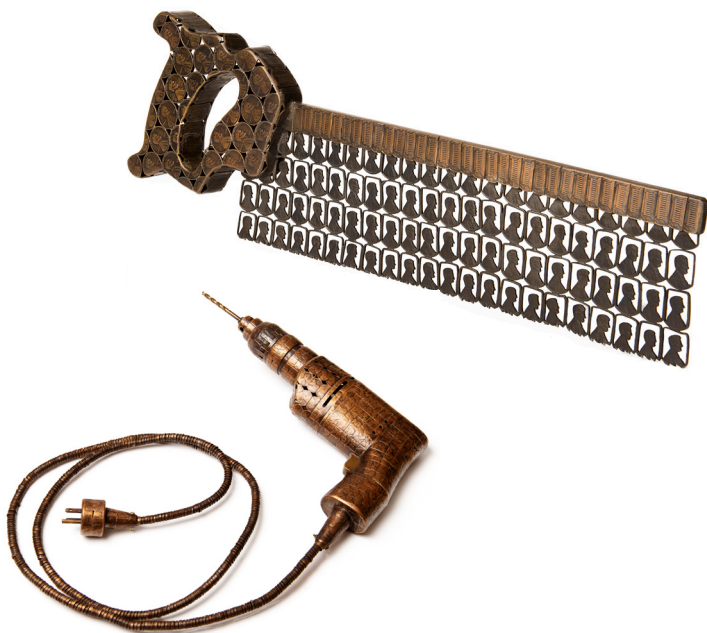


In from the Dollar to the Deutsch Mark, money in its different forms is a continual source of conversation and motivation in our daily lives.

Cultural Currency: Contemporary Art from the Riemer Collection showcases the innovative ways artists use money as a medium to expand its worth beyond a given denomination. Featured artists challenge preconceived definitions of monetary value, meticulously repurposing bills and coins into exquisite and precise works of contemporary art.

Relevant, humorous, and critical, *Cultural Currency* asks viewers to consider how the definition of currency can be reshaped into multifaceted objects layered with meaning and intrigue.

In this exhibition, discover how currency, in its many configurations, “lends” itself to the creation of engaging artworks. *Cultural Currency* is jointly organized by the Woodson Art Museum and collectors Davis Riemer and Louise Rothman-Riemer.



— Meet the Collectors —

Saturday, **APRIL 29**, 1 – 2 pm

MONEY MATTERS GALLERY WALK

Join collectors Louise Rothman-Riemer and Davis Riemer, investment advisors from Oakland, California, for a walk-through of their money-themed collection. During this afternoon gallery stroll, they share insights and stories about *Cultural Currency's* artworks.

(ABOVE) Don and Era Farnsworth, *Art Notes*, 2016, currency, acrylic paint, inkjet print; (LEFT, top) Stacey Lee Webber, *Craftsman Series: Black Saw*, 2012, U.S. Pennies; (LEFT, bottom) Stacey Lee Webber, *The Craftsman Series: Drill*, 2017, U.S. Pennies

FEBRUARY 11 - JULY 9

NATURE MADE STRANGE

Dreams, whimsy, and the unconscious – delve into Surrealist visions of the natural world in *Nature Made Strange*. Featuring more than fifty artworks from the Woodson's permanent collection, this exhibition explores how the Surrealist movement, which began in France in the 1930s, created an entirely new approach to the portrayals of wildlife and landscape. Freed from the constraints of strict "painting-from-life," these images embrace and explore the dreamlike through non-naturalistic colors, experimental paint application, and collage, inviting viewers to escape into their fantasy worlds.



(LEFT) Ajay Brainard, *Craving the Warmth of Your Touch*, ca. 2013, oil on panel; (ABOVE) Aaron Bohrod, *Still Life with Rembrandt*, 1958, oil on gessoed hardboard; (BELOW) Fidelia Bridges, *Birds by the Shore* (detail), 1873, watercolor and gouache on paper on illustration board

APRIL 22 - AUGUST 27

FIDELIA BRIDGES: THE ARTFUL SKETCH

This exhibition celebrates the life and career of noted watercolorist Fidelia Bridges (1834-1923) one hundred years after her death. Despite inauspicious beginnings as an orphan growing up with her three siblings in Massachusetts, she became one of the preeminent women artists of her time and the first woman member of the seminal American Watercolor Society. As an artist, she developed an elegant and exacting style, most often portraying birds and botanicals. Her art also found wide appeal in lithographs and books distributed in the United States.



In *Fidelia Bridges: The Artful Sketch*, her precision and sensitive eye for nature's details are showcased across a series of more than ninety sketches. Come see why biographer Frederick Sharf described this remarkable artist as "combin[ing] the temper of romanticism with the technique of a scientist."

MARCH 11 - APRIL 16

STUDENT ART EXHIBITION

On view during Youth Art Month, the *46th Annual Student Art Exhibition* highlights the original artwork and creative efforts of central and north central Wisconsin students in grades 5-8.

46TH Annual Student Art Exhibition

APRIL 22 - JUNE 4

PORTFOLIOS

Advanced Art from Wausau East & West

Wausau East High School International Baccalaureate (IB) art students collaborate with Advanced Placement (AP) art students from Wausau West to present highlights from their respective art portfolios, the result of rigorous program curricula.



(LEFT COLUMN) Installation view, *exh-IB-ition*, 2022, featuring artwork by Wausau East High School students; (RIGHT COLUMN, counterclockwise) Millard Sheets, *Enchanted Island*, 1978, acrylic on canvas; Leonora Carrington, *The Saints of Hampstead Heath*, 1997, oil and gold leaf on canvas board; Stowe Wengenroth, *House at Port Clyde*, 1938, lithograph

Thursday, APRIL 6, 5:30 - 6:30 pm

POETRY READING

Artwork Insights

Student Ekphrastic Poetry Competition presented by the Woodson Art Museum in collaboration with the Wisconsin Fellowship of Poets (WFOp)

In celebration of National Poetry Month, winning ekphrastic poems written by Wisconsin high school students are read and displayed alongside the permanent collection artworks that inspired them. Wisconsin Fellowship of Poets representative Jeff Anderson joins contest juror and the Museum's curator of collections Amalia Wojciechowski to share thoughts on the written and visual artworks selected.



Thursday, MAY 4, 5:30 - 6:30 pm

PORTFOLIOS

Student Artist Presentations

Join advanced art students from Wausau East and West High Schools as they share insights and accomplishments from senior year studio art efforts, featured in the collaborative exhibition *Portfolios*. Wausau East art department chair Joel Pataconi describes the International Baccalaureate (IB) art program, while Wausau West instructors Maria DeBroux and Samantha Slowiak discuss the national Advanced Placement (AP) art program.



SPARK!

CULTURAL PROGRAMMING
for PEOPLE WITH MEMORY LOSS

Adults with early-to-mid-stage memory loss and their care partners gather for interactive, guided experiences in the galleries followed by hands-on art making inspired by observations and conversations. Register online or call 715.845.7010.

Select Thursdays, 10:30 am - Noon

MARCH 9

CULTURAL CURRENCY

APRIL 13

NATURE MADE STRANGE

MAY 11

PORTFOLIOS

JUNE 8

OUTDOOR SCULPTURES



Programming for adults with memory loss is generously supported by Abbie Spire in memory of Dr. Lyman J. Spire.



Saturday, **MAY 6**, 10:30 am - Noon

ART BEYOND SIGHT

Cultural Currency

Individuals with low vision and blindness explore *Cultural Currency* via a multisensory gallery experience led by Museum educators. Time in the galleries is followed by guided art making in the Museum's classroom studio. Register online or call 715.845.7010.

WE WANT TO SERVE YOU

To schedule a specialized SPARK! or Art Beyond Sight experience, contact scheduling@lywam.org or call 715.845.7010.

APRIL 13 - 16

CURRENCY CONVERSION

Manmade to Handmade

Cultural Currency artist C.K. Wilde visits the Woodson Art Museum to offer programming for area students, makers, and Museum visitors. A grant from the B.A. & Esther Greenheck Foundation supports programs with visiting artists.



Thursday, APRIL 13, 5:30 - 6:30 pm

GUEST ARTIST TALK

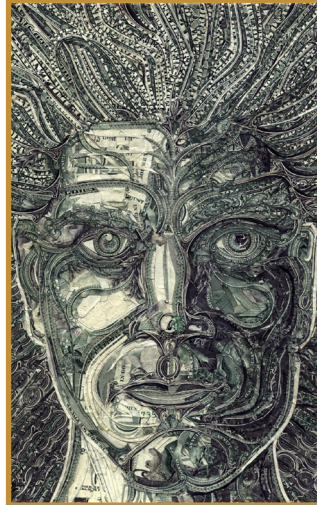
Through his work, artist C.K. Wilde poses the questions “what is value?” and “what is valuable?” Re-examining perceptions of agency, worth, and sociocultural perspectives informs and inspires Wilde’s studio practice. Learn more about Wilde’s process and why money remains his preferred medium for creating art centered on social justice and narrative.

Friday, APRIL 14, 2 - 4 pm

OPEN STUDIO & CONVERSATION

Observe visiting artist C.K. Wilde at work in the Museum’s classroom studio. Engage in conversations on representation, inclusion, history, and creative community while watching a currency collage take shape.

C.K. Wilde



Madison artist C.K. Wilde reimagines cultural imagery through currency collages woven with social commentary. The vivid colors of foreign bills are cut and abutted to create rich mosaics featuring iconic events, subjects, and historical narrative allusions. Wilde uses graphic motifs from bills like a painter adds color to canvas.

Saturday, APRIL 15, 1 - 4 pm

MINI WORKSHOP

Connecting to Community through Collage

Themes of identity, place, and history are at the core of C.K. Wilde’s art making. Participants are invited to make collages relating to personal narrative and the social, natural, and cultural histories of north central Wisconsin. By sourcing and utilizing meaningful materials like images, maps, and print media, participants will learn Wilde’s techniques and conceptual approaches to collage. Registration required; fee: **\$25** for museum members, **\$40** for non-members. Register online or call 715.845.7010.

Sunday, APRIL 16, 1 - 2 pm

GALLERY CONVERSATIONS

Stroll the *Cultural Currency* galleries with C.K. Wilde as he highlights favorite artworks and shares insights from the perspective of an artist making from money.



(LEFT) C.K. Wilde, *Cash Cow-Sacred Chao-We Are What We Eat*, 2009, currency collage; (UPPER RIGHT) C.K. Wilde, *Self Portrait*, 2003, currency collage; (LOWER RIGHT) C.K. Wilde, *The Last Piece of Pie (After Wayne Thiebaud)*, 2011, currency collage

MAKING @ THE MUSEUM

Wednesday, MARCH 22, 1 – 3 pm

CURRENCY INSPIRED COLLAGE Stop by the Museum's classroom to create collages that incorporate designs and motifs found on money.

Wednesday, APRIL 12, 1 – 3 pm

SURREALIST EXPLORATIONS Embrace the imaginative imagery of Surrealism in the Museum's classroom, experimenting with unexpected combinations of subjects and settings.

Wednesday, MAY 24, 1 – 3 pm

IMPRINTS & IMPRESSIONS Drop-in to the Museum's classroom to create and combine image transfers through coin rubbings and currency-inspired stamps to produce unique mixed-media illustrations.



EXHIBITION EXTRAS

Art Park

The Museum's interactive gallery invites visitors to make collages from play money and create Surrealism-inspired drawings with rubbing plates featuring out-of-this-world imagery. Puzzles, games, and toys round out an experiential visit to the Museum's lower-level, encouraging all to play with and take inspiration from currency.



Bell Family
Charitable Foundation

Pop-Up Possibilities

Watch for additional opportunities to look, learn, and make. Follow the Museum on social media for details; Museum members will receive email notices.

RE-CREATIONS

Summer Art Sessions for Children

The summer exhibition, *Reclaimed: The Art of Recology*, inspires young artists to compose two- and three-dimensional creations with unconventional, upcycled materials. Whether weaving printed graphics from newspapers, maps, wallpaper, and magazines or transforming found objects into sculptural assemblages, participants will deconstruct and reimagine during art sessions held outdoors and in Museum classrooms.

JULY 11 & 12, 9 am – Noon

Ages 5 – 8

JULY 18 & 19, 9 am – Noon

Ages 9 – 12

REGISTER NOW & SAVE THE DATES

Fee: **\$40** for museum members, **\$60** for non-members. Register online or call 715.845.7010.

SCHOLARSHIPS AVAILABLE

Register for Museum
programs online!
Scan the QR code or visit

www.lywam.org/learn-do/program-registration



Art Kits & Stop-by-Studio

Pick up Art Kits – free, take-and-make art materials for all ages – in the Museum or from the always-open Stop-by-Studio, for in-gallery or at-home art making. Art Kits are supported by a grant from the M&T Charitable Foundation and Wilmington Trust.



WILMINGTON
TRUST

Learn More

Explore additional educational content like Activity Guides and videos during your visit and online at <https://www.lywam.org/learn-do/digital-resources>.



700 North 12th Street
Wausau, WI 54403-5007 USA

RETURN SERVICE REQUESTED

Non-Profit
U.S. POSTAGE
PAID
WAUSAU,
WISCONSIN
Permit No. 694

ACKNOWLEDGEMENTS

Cultural Currency: Contemporary Art from the Riemer Collection was jointly organized by the Woodson Art Museum along with Davis Riemer and Louise Rothman-Riemer.

The Woodson Art Museum thanks members, donors, grantors, and sponsors who support exhibitions and programs. UMR is the presenting sponsor of *Cultural Currency: Contemporary Art from the Riemer Collection*. Additional program support comes from the B.A. & Esther Greenheck Foundation. Marketing is supported in part by City of Wausau Room Tax funds. Exhibitions and programs are supported in part by a grant from the Wisconsin Arts Board with funds from the State of Wisconsin and the National Endowment for the Arts.



WEEKLY BLOG: WOODSON WANDERINGS



CULTURAL CURRENCY

MARCH 4 - JUNE 4, 2023

(COVER) Marshall Weber, *Buck Skin*, 2006, 180 dollar bills, glue, thread
(BACK) Kelli Hoppmann, *She Wore the Same Thing Every Day*, 2017, currency, oil on board

MUSEUM HOURS

Tuesday - Friday	9 am - 4 pm
First Thursday of each month	9 am - 7:30 pm
Saturday - Sunday	Noon - 5 pm
Closed Monday and holidays, including Easter	

CONTACT US

Phone: 715.845.7010
Email: info@lywam.org
Online: www.lywam.org

CONNECT WITH US

& Share Your Images

