

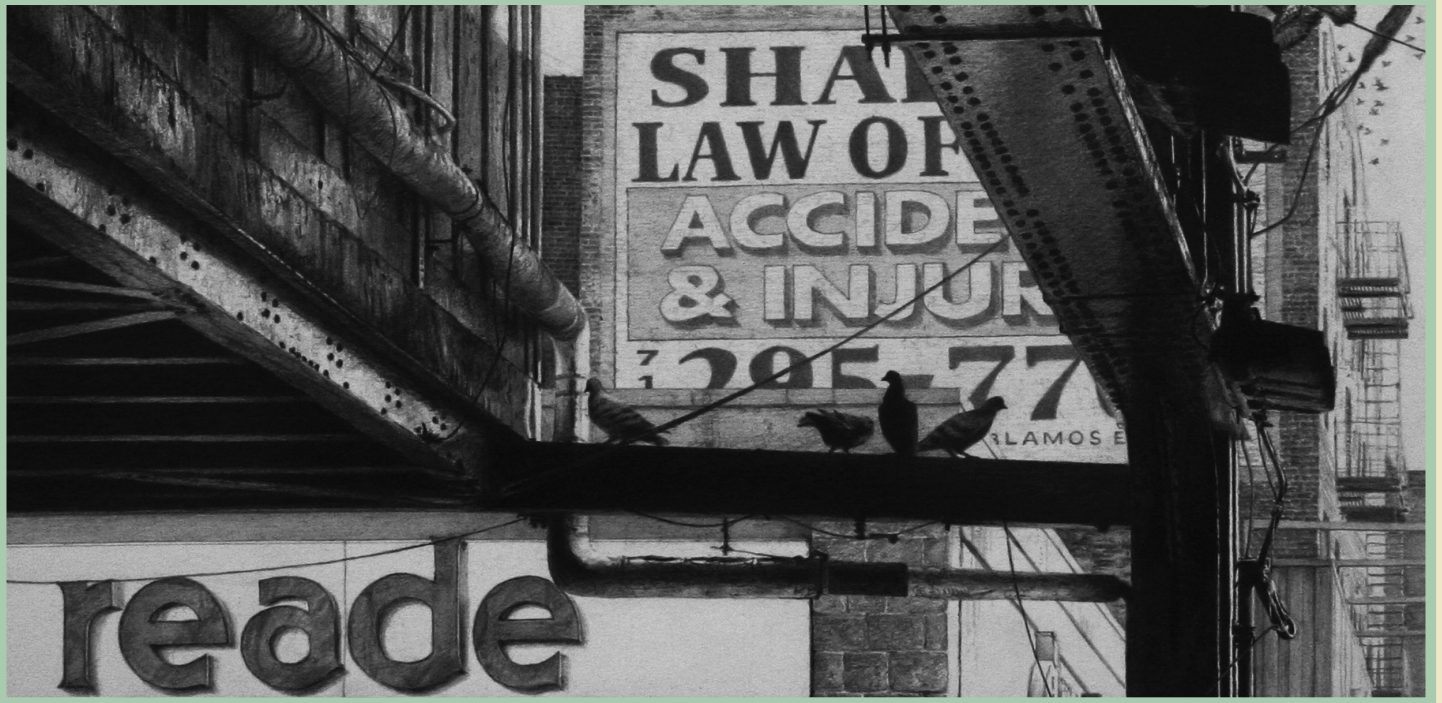
Leigh Yawkey Woodson Art Museum

A Civic Wilderness

From the Museum's Collection

S P R I N G
2 0 2 4





Through JUNE 16

A CIVIC WILDERNESS

A *Civic Wilderness* invites you to reflect on the intricate relationship between the urban and the natural. Featuring more than forty artworks from the Museum's collection, this exhibition seeks to capture the poetic juxtaposition of nature's persistence against the backdrop of human intervention.

Through artists' eyes, we see the city not as an antagonist to nature but as a canvas for creative integration. Artworks here celebrate the beauty of this coexistence and challenge us to consider our role in preserving and nurturing the delicate balance between the two worlds. Throughout the exhibition, artists variously explore the transformation of pockets of the urban environment into urban oases, offering respite from the 'concrete jungle,' emphasize the presence of birds, insects, and other creatures that thrive amidst the hustle and bustle of city life, and demonstrate how the city is a dynamic canvas in its own right.

Explore the profound relationship between nature and the city through the lens of art, revealing how artists have captured, reimagined, and celebrated this dynamic interplay.



Through JUNE 2

FROM CONCEPT TO CANVAS

The Artistic Process

Step into the fascinating world of artistic creation in *From Concept to Canvas*, an exhibition that peels back the layers of inspiration, innovation, and imagination behind a finished artwork.

Featuring over sixty artworks, sketches, and sculptural maquettes from the Woodson's collection, the works highlight the various stages of artistic development, offering a unique glimpse into the creative process. Explore the initial spark of inspiration, the experimentation with different techniques and materials, and the moments of frustration and breakthrough that artists experience along the way.

With artworks displayed next to their archival studies, discover how artists channel their observations into their work, continuously tweaking ideas as they move from sketch to canvas to arrive at a final composition. Join us in exploring the inner workings of the artistic mind and experience the magic of art's evolution.

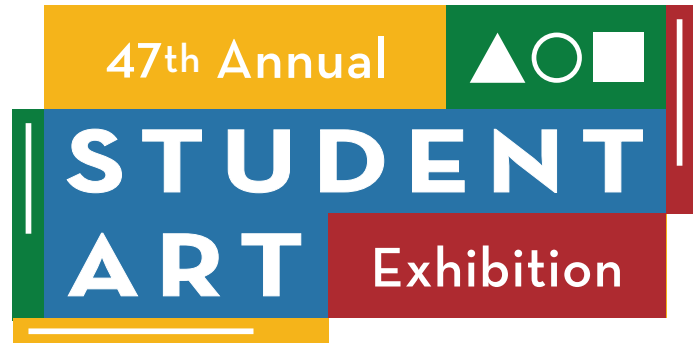
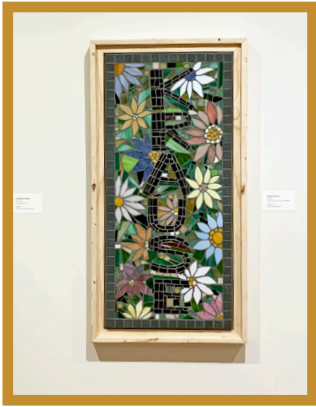


(ABOVE) Ray Sexton, *Sketch for Water-Colors*, 1992, oil on canvasboard; and *Water-Colors*, 1992, oil on canvas; William Alther, *Study for White on White*, 2004, pencil on paper; and *White on White*, 2004, oil on Belgian linen; (LEFT PAGE) Terry Miller, *In the Summer, In the City* (detail), 2008, graphite on Bristol board; Jenny Hyde-Johnson, *Impangele* (detail), 2013, acrylic on canvas

MARCH 2 - MARCH 31

STUDENT ART EXHIBITION

Celebrate Youth Art Month and view artwork by central and north central Wisconsin students in grades 9 - 12 in the *47th Annual Student Art Exhibition*. This exhibition highlights the original and creative efforts of students in public, parochial, and home schools.



(LEFT) Artwork from the 45th Annual Student Art Exhibition

Saturday, APRIL 6, 1 pm

EKPHRASTIC POETRY READING

The Student Ekphrastic Poetry Competition is presented by the Woodson Art Museum in collaboration with the Wisconsin Fellowship of Poets (WFOp).

In celebration of National Poetry Month, winning ekphrastic poems written by Wisconsin high school students are read aloud and displayed alongside the permanent collection artworks that inspired them. A Wisconsin Fellowship of Poets representative joins Amalia Wojciechowski, the Museum's assistant director and collections curator as well as contest juror, for thoughts on the written and visual artworks selected.



WISCONSIN
FELLOWSHIP
of
Poets



Scan the QR code to learn more
and submit online or visit
lywam.org/ekphrasticpoetrycompetition/



APRIL 6 - MAY 19

PORTFOLIOS

Wausau East High School International Baccalaureate (IB) art students collaborate with Wausau West High School Advanced Placement (AP) art students to present highlights from their respective art portfolios, the result of rigorous program curricula. Enjoy the diverse and impressive artwork created by local high school students in this collaborative exhibition.

APRIL 6 - APRIL 28

IB Artwork on View

APRIL 27 - MAY 19

AP Artwork on View

Thursday, MAY 2, 5:30 - 7 pm

PORTFOLIOS

Student Artist Presentations

Join students and educators from Wausau East and West High Schools as they share insights and accomplishments from senior year studio art efforts, featured in *Portfolios*. Joel Pataconi (Wausau East) describes the International Baccalaureate (IB) art program and Samantha Slowiak (Wausau West) discusses the national Advanced Placement (AP) art program. Hear directly from student artists about the inspiration behind their portfolio works.

(LEFT PAGE, bottom left to right) Owen Gromme, *Gate*, 1927, oil on canvas; Aleta Rossi-Steward, *Disintegration*, 2020, oil on Gessobord; Will Barnett, *Study for the Dream*, 1990, watercolor and carbon on vellum; (RIGHT) Chris Thao, *Somewhere Else*, 2023, assorted computer parts, foam board, acrylic paint, gray spray paint, airbrush

(ABOVE, left to right) Jasmine Hoganson, *Butter Runway*, 2023, oil on canvas; Luella Long, *Snug as a Bug in a Rug*, 2023, acrylic on canvas; Madisen Wolff, *Breathe (detail)*, 2023, mixed media on canvas

PORTFOLIOS

Advanced Art from Wausau East & West



Spring Programs

Saturday, MARCH 2, 2 - 4 pm

FLOW

Artists, Activists and Educators Working with Water

Presented in collaboration with the University of Wisconsin-Madison's Interdisciplinary Arts Residency program, *Flow* brings together artists, activists, and educators working with water. Learn more from visual artist Laura Anderson Barbata and local community representatives who will present their work and discuss the broad theme of water. Join the cross-disciplinary event and engage with participants through community conversations and connections. Laura Anderson Barbata is a transdisciplinary artist based in New York and Mexico City. Her work addresses social justice and the environment through combinations of performance, procession, dance, music, spoken word, textile arts, costuming, papermaking, zines, and protest.



GALLERY WALKS

Join assistant director and collections curator Amalia Wojciechowski to learn more about exhibitions from the Museum's collection during two gallery walks this spring.

Thursday, MARCH 7, 5:30 - 6:30 pm
From Concept to Canvas

Thursday, APRIL 4, 5:30 - 6:30 pm
A Civic Wilderness



Tuesday, MARCH 19, 4 - 5:30 pm

TREASURING MEMORIES

Supporting Community Grief

Children, teens, and families coping with the death of a loved one create memorial art by painting bird houses. Perfect for display indoors or outside, this functional object will act as a cherished memento honoring a loved one who has passed. Taking place at the Museum's Glass Box Studio, this free program offers the opportunity to share memories, reflections, and build connections. **Questions? Call Amy Kitsemel at the Aspirus Grief Center, 715.847.2703. Registration is limited. Register online or call 715.845.7010.**



(ABOVE) Laura Anderson Barbata, *Ocean Calling*, 2017, procession, performance, dance, music, textile arts, costuming, ritual, and protest, United Nations Plaza, New York, photo by Frank Veronsky; (LEFT) Denis Clavreul, *Bad Weather*, 1990, watercolor on Fabriano paper



SPARK!

CULTURAL PROGRAMMING
for PEOPLE WITH MEMORY LOSS

Adults with early-to-mid-stage memory loss and their care partners gather for interactive, guided experiences in the galleries followed by hands-on art making inspired by observations and conversations. Register online at lywam.org/learn-do/program-registration or call 715.845.7010.

Select Thursdays, 10:30 am – Noon

MARCH 14

FROM CONCEPT TO CANVAS

APRIL 11

PORTFOLIOS



Register for Museum
programs online!
Scan the QR code or visit
www.lywam.org/learn-do/program-registration



Programming for adults with memory loss is
generously supported by Abbie Spire in memory of
Dr. Lyman J. Spire.



Saturday, APRIL 27, 10:30 am – Noon

ART BEYOND SIGHT

A Civic Wilderness

Individuals with low vision and blindness explore exhibitions from the Museum's collection via a multisensory gallery experience led by Museum educators. Time in the galleries is followed by conversations and hands-on making in the lower-level classroom studio.

Register online or call 715.845.7010.

We Want to Serve You

To schedule a specialized SPARK! or Art Beyond Sight experience, contact scheduling@lywam.org or call 715.845.7010.



ART BABIES For Kids 2 Years & Under

Visit the Museum for an hour of socializing, learning through sensory play, and storytelling. Collection artworks exhibited in *From Concept to Canvas: The Artistic Process* and *A Civic Wilderness* will inspire and delight through activities meant to enrich your child's senses. Prams, strollers, and front packs are welcome.

Select Tuesdays, 9 - 10 am

MARCH 26
LINES & COLORS

APRIL 30
BUSY BUILDERS



Register for Museum programs
online! Scan the QR code or visit
lywam.org/learn-do/program-registration

CREATIVE EXPLORERS For Kids 2 - 4 Years

Toddlers and accompanying adults explore art through movement and hands-on projects.
Register online or call 715.845.7010.

Select Fridays, 10:30 - 11:30 am

MARCH 29
SWIRLS & SWOOPS

Calling all artists! Introduce your little artist to the elements of art through a sensory experience inspired by *From Concept to Canvas: The Artistic Process*. With swirls and swoops of color, budding artists will discover that it's not always about the finished work, sometimes it's about the process.

APRIL 26
SILLY GOOSE

Five little ducks went out one day to celebrate National Poetry Month at the Museum! Fall in love with the world of Mother Goose and enjoy storytelling and a sensory experience before exploring hands-on art projects inspired by our favorite nursery rhymes.





Art Babies: 2 years & under



Creative Explorers: 2 to 4 years



Art Kids: 8 to 12 years



ART KIDS

For Kids 8 – 12 Years

Emerging artists join Museum educators at the Glass Box Studio to learn hands-on processes to add to their artistic toolbox.

Register online or call 715.845.7010.

Select Thursdays, 4:30 – 6 pm

MARCH 7

FLORAL EXPRESSIONS

Take a look . . . it's in a book! Celebrate National Reading Month and create art based on picture books. Art Kids will explore *A Crown for Corina* by Laekan Zea Kemp while discovering the world of flowers and their meanings. Participants will create a floral artwork celebrating the traits that make them unique.

MAY 2

PIZZA PRINTS!

Participants will create art so appetizing that you could almost eat it! Experience artwork from the Museum's collection in *From Concept to Canvas: The Artistic Process* and be inspired by the enticing world of collagraph prints.





EARTH SIGNS

Summer Art Sessions for Children

Taking inspiration from the summer exhibition *Women Reframe American Landscape*, young artists will explore the many facets of landscape through traditional and alternative art-making techniques.

Artists, ages 9 - 12, will explore two- and three-dimensional art-making processes that include *en plein air* painting, flower pounding, and imaginary vegetation sculptures coming to life.

Younger artists, ages 5 - 8, will become earth artists while exploring outdoors, working on a collaborative sculpture, creating sun prints, and crafting a mosaic-inspired planter.

Tuesday & Wednesday JULY 9 - 10, 9am - Noon

Ages 5 - 8

Tuesday & Wednesday, JULY 16 - 17, 9am - 3pm

Ages 9 - 12

REGISTER NOW & SAVE THE DATES

Fee: \$60 for Museum members; \$85 for non-members.
Register online or call 715.845.7010. Scholarships available.



DRAWING BASICS

Four-Part Workshop Series

Take this introductory course taught by Museum staff members Rachel Hausmann-Schall and Dave Jones to sharpen your drawing skills. Learn important concepts over this four-part class that will create a strong foundation of drawing techniques beneficial for any artistic practice. Each two-hour session will focus on a different theme, which will lay the groundwork for a final five-hour drawing class where you'll test your skills and create a large-scale observational drawing inspired by objects from the Museum's collection. No previous drawing experience necessary; perfect for teens, adults, or beginners.

Fee: \$85 for Museum members, \$100 for non-members; includes all four classes, materials, and meals for each session. Register online or call 715.845.7010. Scholarships available.

Tuesday, APRIL 2, 5:30 - 7:30 pm

Part 1: Mark Making & Gesture

Tuesday, APRIL 9, 5:30 - 7:30 pm

Part 2: Composition & Value

Tuesday, APRIL 16, 5:30 - 7:30 pm

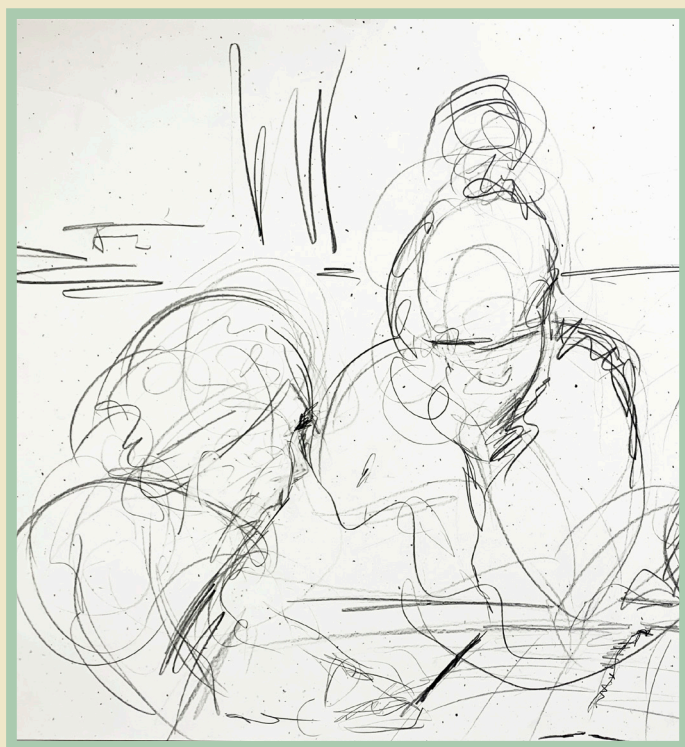
Part 3: The Art of Critique

Saturday, APRIL 20, 10 am - 3 pm

Part 4: Think Big, Draw Big



**Register for Museum programs
online! Scan the QR code or visit**
lywam.org/learn-do/program-registration



EXHIBITION EXTRAS

Art Park

Visit the Museum's interactive family gallery and take inspiration from artworks in the collection. Try out artistic processes ranging from drawing and collage to watercolor resist to create your own masterpiece.

Pop-Up Possibilities

Watch for additional opportunities to look, learn, and make. Follow the Museum on social media for details; Museum members will receive email notices.

Art Kits & Stop-by-Studio

Pick up Art Kits - free, take-and-make art materials for all ages - in the Museum or from the always-open Stop-by-Studio, for in-gallery or at-home art making. Art Kits are supported by a grant from the M&T Charitable Foundation and



Learn More

Explore additional educational content like Activity Guides and videos during your visit and online at www.lywam.org/learn-do/digital-resources.



700 North 12th Street
Wausau, WI 54403-5007 USA

RETURN SERVICE REQUESTED

Non-Profit
U.S. POSTAGE
PAID
WAUSAU,
WISCONSIN
Permit No. 694

ACKNOWLEDGEMENTS

Marketing is supported in part by City of Wausau Room Tax funds. Exhibitions and programs are supported in part by a grant from the Wisconsin Arts Board with funds from the State of Wisconsin and the National Endowment for the Arts.



WEEKLY BLOG: WOODSON WANDERINGS

(COVER) Micheal Budden, *The Lunch Crowd*, 2015, oil on canvas;
(LEFT) Susie M. Barstow, *Mountain Lake in Autumn*, 1873, oil on canvas

MUSEUM HOURS

Tuesday – Friday	9 am – 4 pm
First Thursday of each month	9 am – 7:30 pm
Saturday – Sunday	Noon – 5 pm
Closed Monday and holidays, including Easter	

CONTACT US

Phone: 715.845.7010
Email: info@lywam.org
Online: www.lywam.org

CONNECT WITH US

& Share Your Images



WOMEN REFRAME AMERICAN LANDSCAPE

Susie Barstow & Her Circle – Contemporary Practices

MAY 4 – AUGUST 25, 2024